



Accessories for 6.3032.250

Below, the accessories are grouped into Scope of delivery and Optional accessories.
Please keep this printout at hand for ordering replacement material.
These lists may be subject to change.

Scope of delivery 6.3032.250

Qty.	Order no.	Description	
1 pcs	6.1446.030	Ball stopper / B-14/(15) For the movable holding of buret tips in titration vessels	
1 pcs	6.1446.040	Threaded stopper / M6	
1 pcs	6.1543.060	Tip / M6 thread Tip with M6 thread. Together with the 6.1805.160 capillary and the 6.1446.030 link stopper, it makes up the entire 6.1537.010 buret tip.	
1 pcs	6.1543.200	Titration tip / M6 thread Titration tip with antidiffusion valve.	

1 pcs **6.1619.000** **Adsorber tube for Dosing Unit**



1 pcs **6.1805.100** **FEP tubing / M6 / 40 cm**
With light and kink protection



1 pcs **6.1829.010** **FEP aspiration tube M6, 0.25 m**
With M 6 thread. For Dosing Unit



1 pcs **6.2008.030** **Buret tip storage vessel for Dosing Unit**
Together with 6.2008.050 buret tip holder provides a fastening for the buret tips on 6.3032.XXX Dosing units.



1 pcs **6.2008.050** **Storage vessel holder for Dosing Unit**
Together with 6.2008.030 buret tip storage vessel provides a fastening for the buret tip on Dosing units.



1 pcs **6.2244.020** **Cards for intelligent Exchange Unit**
Set of 10 pieces, different colors.



1 pcs **6.2739.000** **Wrench**
For tightening connectors



0 pcs **6.2803.000** **Grease (1 oz.)**
Special quality (without silicone). For grease-free ground joint connections see 6.2713.XXX



1 pcs **6.2803.010** **Grease (2 g)**
Special quality (without silicone). For grease-free ground joint connections see 6.2713.XXX



Optional accessories

Order no.	Description	
6.1608.023	Amber glass bottle / 1000 mL / GL 45 For Exchange Units. Bottle for auxiliary solutions.	
6.1608.030	Round glass bottle / 1000 mL / GL 45	
6.1608.040	PE bottle / 1000 mL / GL 45 For Exchange Units. Bottle for auxiliary solutions.	
6.1608.050	Drying bottle / 100 mL / GL 45	

6.1608.060**Bottle / 100 mL**

6.1618.000**Thread adapter 32 mm to GL 45**

Adapter for bottles with 32 mm thread (Fluka, Riedel de-Haen 500 mL...) to GL45



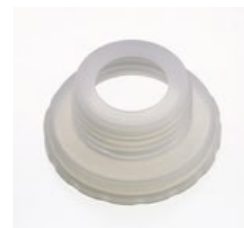
6.1618.010**Thread adapter 28 mm to GL 45**

Adapter for bottles with 28 mm thread (Fisher...) to GL45



6.1618.020**Thread adapter S 40 to GL 45**

Adapter for bottles with S40 thread (Merck...) to GL45.



6.1618.050**Thread adapter 40 mm to GL 45**

Adapter for bottles with 40 mm thread to GL45.



6.1618.060**Thread adapter GL 45 to GL 45**

Thread adapter GL45 to GL45; e.g. for reagent bottles with extended flange

